

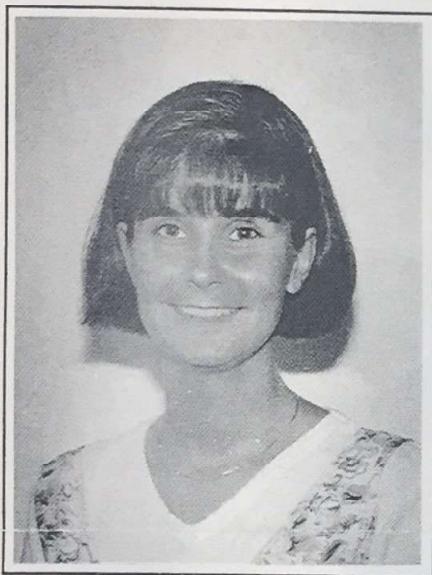
THE INNOVATOR

NEWSLETTER OF THE CHARLES RIVER MUSEUM OF INDUSTRY
Where Innovative Minds Meet

Volume III Number I

September, 1998

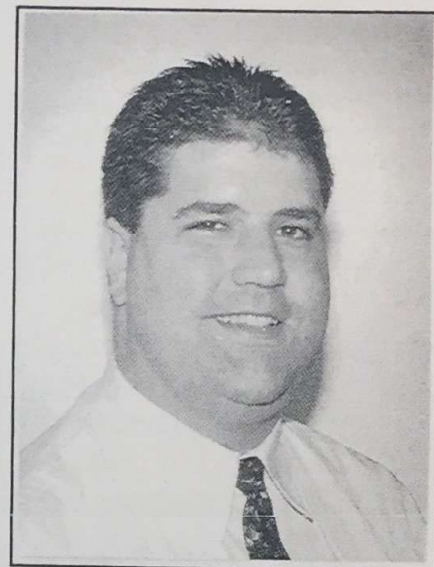
The Alliance of a Lifetime



Amy Goodwin
Executive Director
Charles River
School to Career Consortium



Karen M. LeBlanc, *Executive Director of the Charles River Museum of Industry*, **Mark Driscoll** and **Amy Goodwin**



Mark Driscoll
Director
Charles River Public Internet Center

We have some incredibly wonderful and exciting news. The Charles River School to Career Consortium and the Charles River Public Internet Center are moving into a space adjacent to the Charles River Museum of Industry. The potential for amazing collaborations in the future is limitless with the beginning of this new affiliation.

Amy Goodwin, Executive Director of CRC, and Mark Driscoll, Director of PIC, have already taken up residence in the CRMI headquarters. This cozy arrangement allows these three entities to immediately begin their work together. Less than a stone's throw apart, CRMI, CRC and PIC are in constant contact which allows them to develop and initiate many of the plans that will benefit all three organizations as well as the community.

Karen M. LeBlanc, as the Executive Director of both CRMI and PIC and as a member of the CRC executive board, will be a common link between the three organizations.

How will this partnership benefit CRMI? The very fact that PIC and CRC will be sharing space with CRMI will bring more people from the general public to this location and they will be able to discover the Museum. A new telecommunications gallery will lead from the Museum into PIC and the CRC resource center.

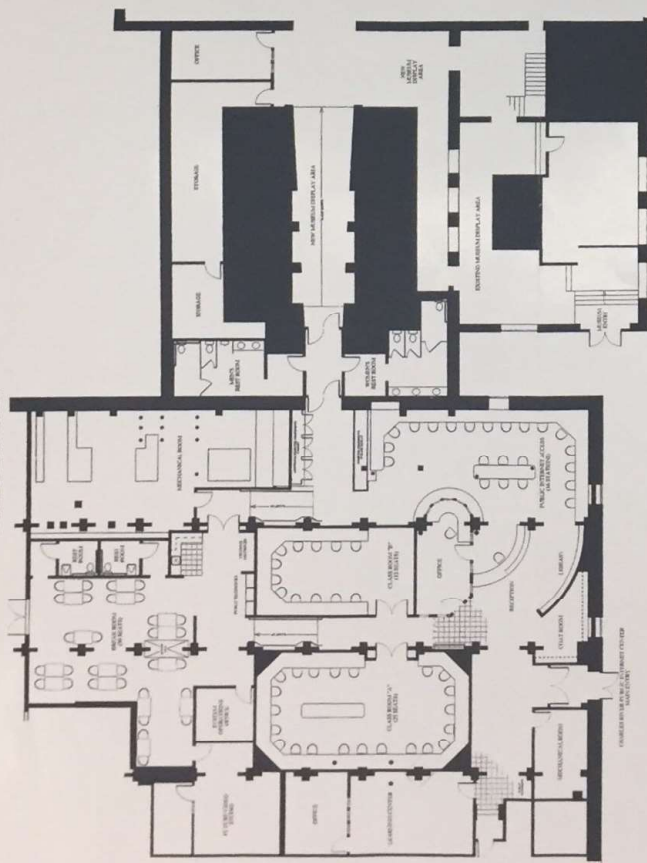
The synergy will make this alliance very powerful in terms of the services that will be offered and the funding and grant opportunities that will be accessible to all. CRMI, CRC and PIC all have the ability to connect education, employment, and technology. They will work together to educate the public so that everyone has the opportunity to learn the skills necessary to become a part of a constantly evolving world of technology.

Amy Goodwin has a masters in curriculum design and she will use her skills to enhance the Museum by aiding in the creation of new and innovative educational programs that will allow the Museum to become even more influential in the education arena. These programs will be designed in compliance with the educational frameworks guidelines.

Mark Driscoll, with his sales, academic and computer expertise will manage the center and will lead the effort of marketing the Public Internet Center's training facility to corporate partners and will also work to develop other markets and curriculum. The companies that utilize PIC will have the opportunity to learn about the Museum, the wonderful lessons it has to offer, and its potential as a site for corporate meetings and functions.

continued on page 3

THE CHARLES RIVER PUBLIC INTERNET CENTER A PLACE TO GROW



Above: Layout plan of the Charles River Public Internet Center. (Designed by Paul Dumas.)



Above: Storage area before clean up.

WHAT IS PIC?

The Charles River Public Internet Center will be a state of the art, technology center, consisting of a Public Access Center that will be open, free of charge, to anyone wishing to become computer literate. What will make the free Public Access Area possible is the income generated from classrooms that will be utilized by corporations and others for computer training. There will also be a new Museum telecommunications gallery which will physically link PIC and CRMI.

THE BIG MOVE

Ten Men, ten dumpsters, ten days.....that is what it took to clear the way for PIC. Headed by Robert and Kenneth LeBlanc, and Albert Savadian, a hardworking team of individuals removed tons and tons (literally) of heavy metal machinery from what is the future site of the Public Internet Center. They survived the big move with good humor, grace, and a lot of Dunkin Donuts and cold drinks. Construction has begun and it would not be possible without the help of these true friends and supporters of CRMI.



Above: Pre-Renovation photo of newly emptied future site of PIC.

3 INNOVATOR

ALLIANCE...continued from page 1

This is undoubtedly the alliance of a lifetime. Our arrangement is an example of how there can be strength in numbers. CRMI, CRC, and PIC fit together so perfectly that it is like all the pieces of a puzzle have finally come together. And, alas, a hidden jewel known as the Charles River Museum of Industry will be newly discovered time and time again.

THE ENCAMPMENT

And oh what a rainy day it was! The New England Reenacting Society, headed by Norman Roy, spent an incredibly wet and windy weekend on Waltham Common. Approximately forty reenactors in full civil war attire set up an encampment, including a hospital for wounded soldiers. The weekend turned out to be very authentic, complete with torrential downpours and power outages that made lanterns a necessity. However, these civil war reenactors kept their spirits high throughout the floods and lightning bolts and proved that they are real troopers.

CRMI WISH LIST

We are seeking donations that will help us to purchase a laminating machine. The machine will be used for laminating membership cards and exhibit labels. Please send contributions to: Charles River Museum of Industry

154 Moody Street
Waltham, MA 02453.

We thank you for your support.

JOIN THE CRMI FAMILY! MEMBERSHIP

INDIVIDUAL	\$25.00
FAMILY	\$40.00
SENIOR/STUDENT	\$15.00
SUSTAINING	\$100.00

NAME
ADDRESS

ENCLOSED CHECK FOR \$
PAYABLE TO CRMI

INNOVATOR NEWSLETTER

EDITOR
KIM KALEN

PHOTOGRAPHY BY
ROLAND PERRY

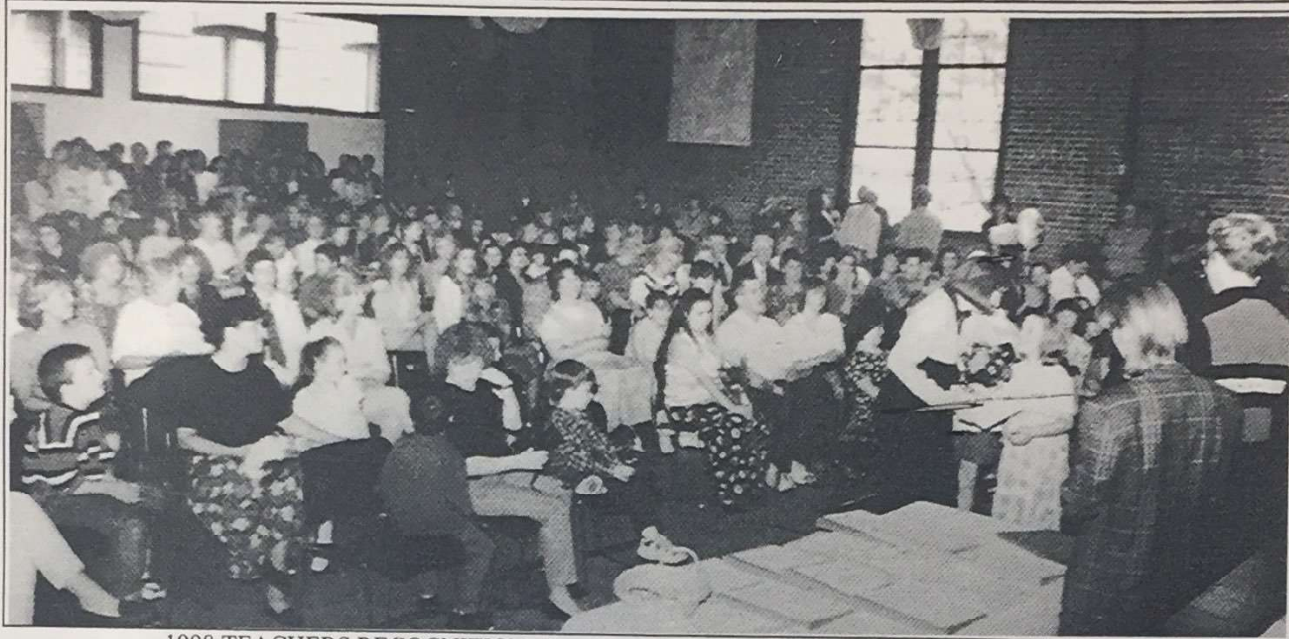
copyright 1998

CRMI
154 MOODY ST
WALTHAM MA
02453

Tel (781) 893-5410
Fax (781) 891-4536

web site
www.crmi.org/~crmi

CELEBRATE DOWNTOWN CELEBRATE HISTORY
HISTORIC WALTHAM - MARCHING THROUGH TIME PARADE
SUNDAY, SEPTEMBER 27th, 1998 @ 1:00PM
THE PARADE ROUTE IS GORE ST TO MAIN ST TO MOODY ST TO MAPLE ST
DO NOT MISS THIS!!!



1998 TEACHERS RECOGNITION AWARDS: Record number of teachers honored by record number of students at the News Tribune's and CRMI's annual event.


CHARLES RIVER
MUSEUM OF INDUSTRY

Non-Profit Org.
U.S. Postage Paid
BULK MAIL
Permit No. 57401
Waltham, MA 02154

Ms. Melissa Mannon
Waltham Public Library
735 Main Street
Waltham, MA 02154

154 Moody Street
Waltham, Massachusetts 02453